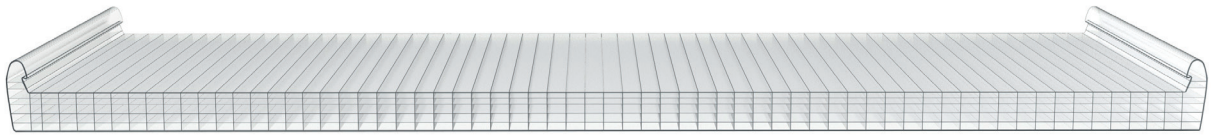
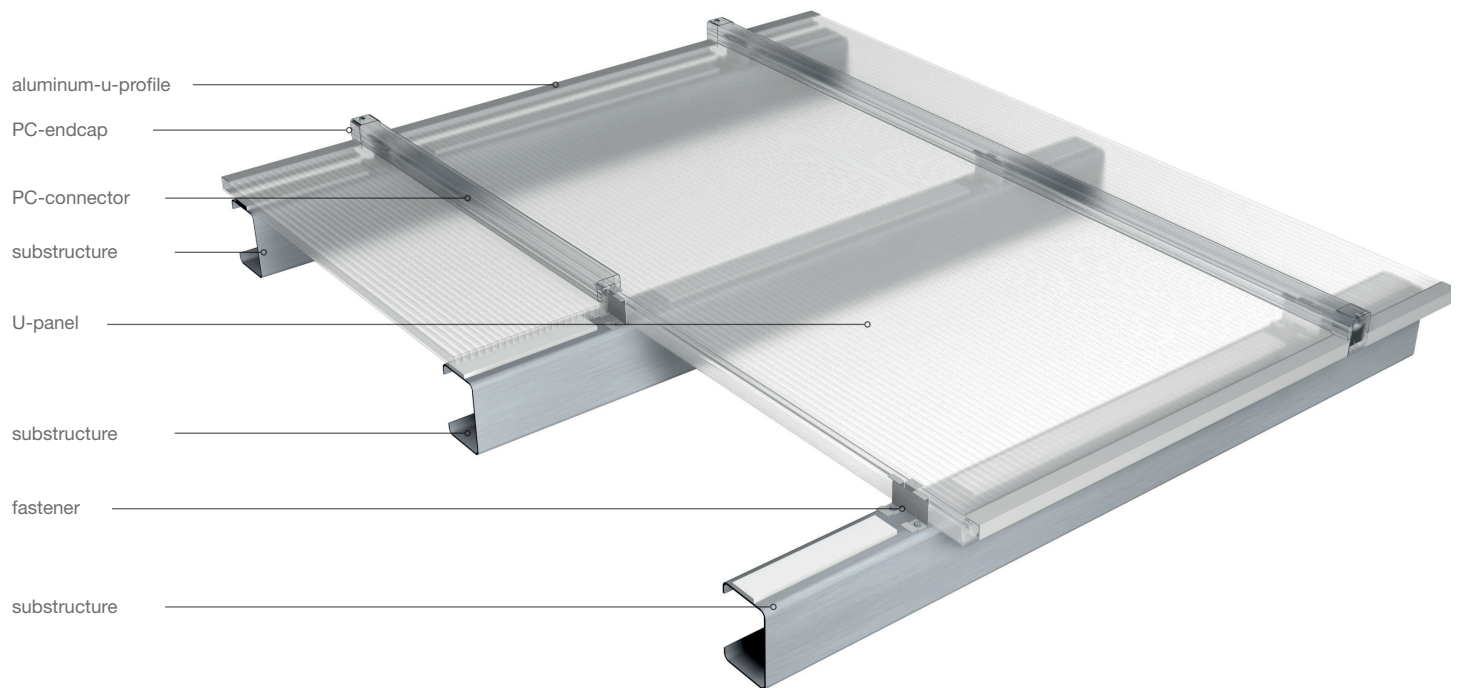
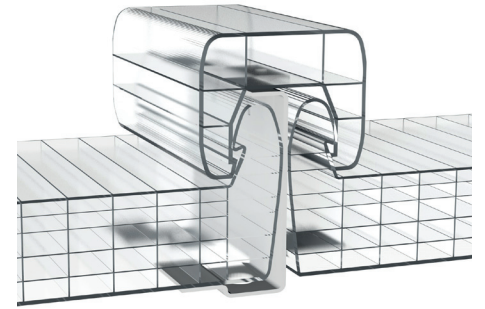


## Rodeca U-Panels



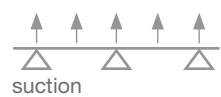
### Characteristics

width:	630 mm
thickness:	20 mm
Up-value:	approx. 1,7 W/m <sup>2</sup> K
weight:	approx. 3,4 kg/m <sup>2</sup>
layer/chambers:	6 layer / 5 chambers
fire classification:	B-s1,d0 acc. EN 13501
tolerances:	EN 16153
bending radius:	min. 6,0m
light transmission:	crystal approx. 60% opal approx. 31%
colours:	crystal, opal color & DuoColor on request

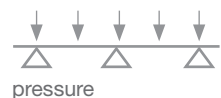


### Load resistance

The information on load resistance relates to the failure of the panels or accessories.  
The values do not contain any safety factors and do not replace any country-specific and building law certificates.

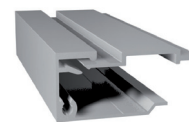


span	load
1,0 m	1,7 kN/m <sup>2</sup>
1,5 m	1,4 kN/m <sup>2</sup>

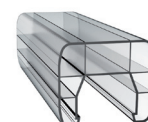


1,0 m	2,6 kN/m <sup>2</sup>
1,5 m	1,8 kN/m <sup>2</sup>

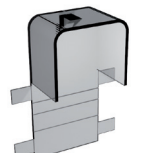
### Accessories



side profile  
aluminium-u-profile  
462040 + 492001



Polycarbonat  
connector  
380062



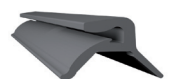
Polycarbonat  
endcap  
395008



front end  
aluminium-u-profile  
462011



fastener  
494020N



gasket for side profile  
902901

# Overview U-Panels

## Rodeca U-Panels

### PC 2600-10-4-U



width: 600 mm  
thickness: 10 mm  
Up-value: approx. 2,6 W/m<sup>2</sup>K

colours:  
crystal / opal /  
color

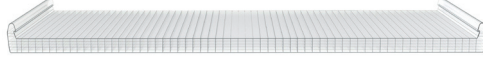
### PC 2630-16-6-U / PC 2630-16-6-U HD



width: 630 mm  
thickness: 16 mm  
Up-value: approx. 1,9 W/m<sup>2</sup>K

colours:  
crystal / opal /  
color / Duocolor

### PC 2630-20-6-U



width: 630 mm  
thickness: 20 mm  
Up-value: approx. 1,7 W/m<sup>2</sup>K

colours:  
crystal / opal /  
color

### PC 2630-25-6-U / PC 2630-25-6-U HD



width: 630 mm  
thickness: 25 mm  
Up-value: approx. 1,6 W/m<sup>2</sup>K

colours:  
crystal / opal /  
color / Duocolor

