

# Installation manual window series 85



## Variants



**Tilt-turn-window**  
opening inwards



**Top-hung-window**  
opening outwards at the bottom



**Pivot-window**  
opening outwards at the bottom



**Bottom-hung-window**  
opening inwards at the top

## Glazing

PC 2540-4



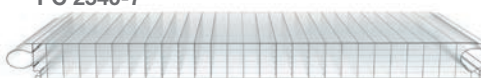
PC 2540-4-MC



PC 2540-6



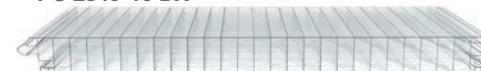
PC 2540-7



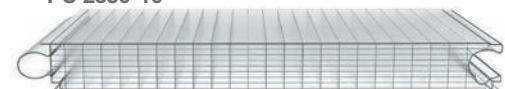
PC 2540-10



PC 2540-10 DX

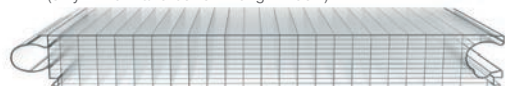


PC 2550-10



PC 2560-12

(only tilt-turn and bottom hung window)

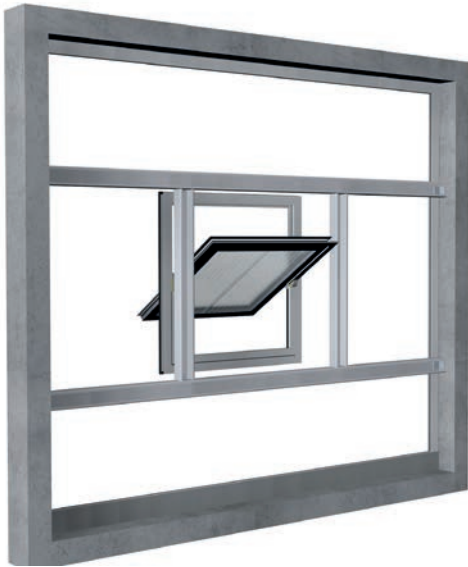


insulated glass  
with thickness of 4mm - 52mm

# Installation manual

## window series 85

Please check the complete delivery of materials and note our general information storage and installation instructions! The substructure on site must be checked for line and level before the translucent building elements are installed. The sealing to substructure and all fixings are not part of the Rodeca system and must be adapted to conditions on site.



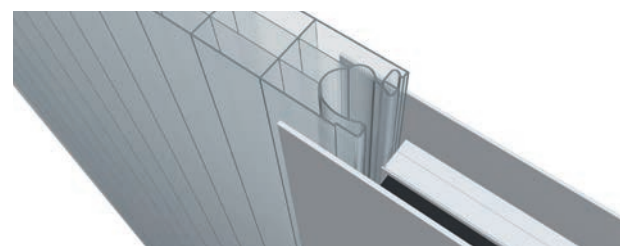
Position, quantities and dimensions of the substructure should be in accordance to the proportion of the window and the project-related loads. A continuously fixing is recommended.

### Circumferentially installation of panels

Frame profiles and panels have to be installed as described in the corresponding installation manual, up to the point at which the window should be placed.

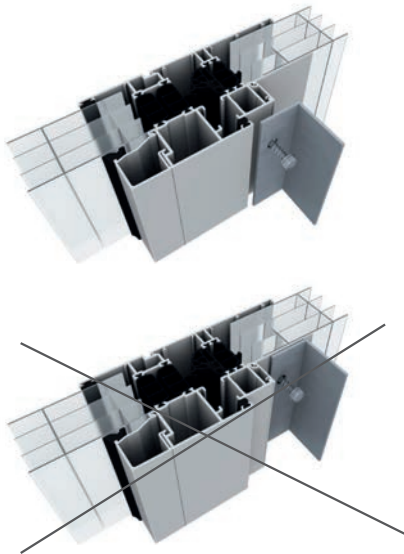


The window can now be pushed onto the adjacent panel from the side.

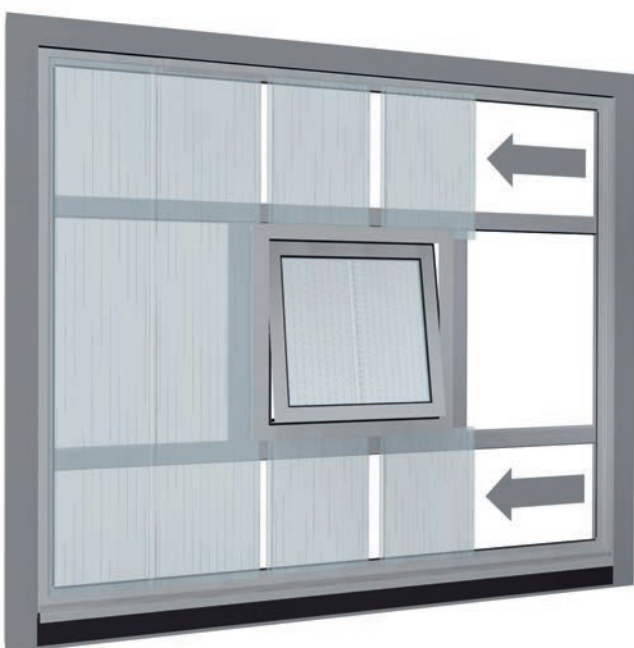


# Installation manual window series 85

After the vertical and right-angled alignment the window has to be screwed from the building's inside friction-locked with the substructure. All fasteners and the substructure must be verified by the customer. Make sure that fasteners are connected to the frame and not to the spacer bar. The surrounding panels must not be damaged.



After determination of the measures for panels, taking into account the expansion, below or rather above the window, the panels must be lowered into the frame profiles and pushed up against the last installed panel. Please note that the tongue must be placed correctly into the groove. The panels below the window may not exceed a height of 6.00 m.

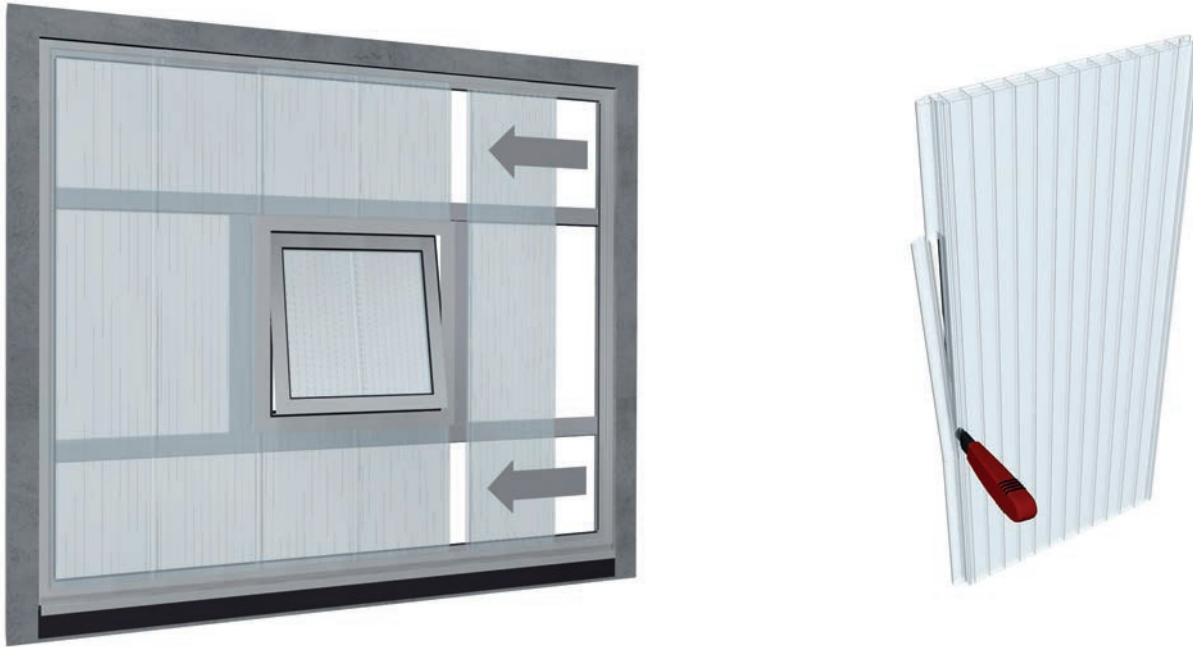


If the panels are not delivered to size but have to be cut on site, the ends of the panels must be sealed. The upper end must be sealed with Anti-Dust-Tape, the lower end must be sealed with Butyl-Tape.



# Installation manual window series 85

The tongue of the adjacent side panel must be cut off in the window area before continuing mounting.



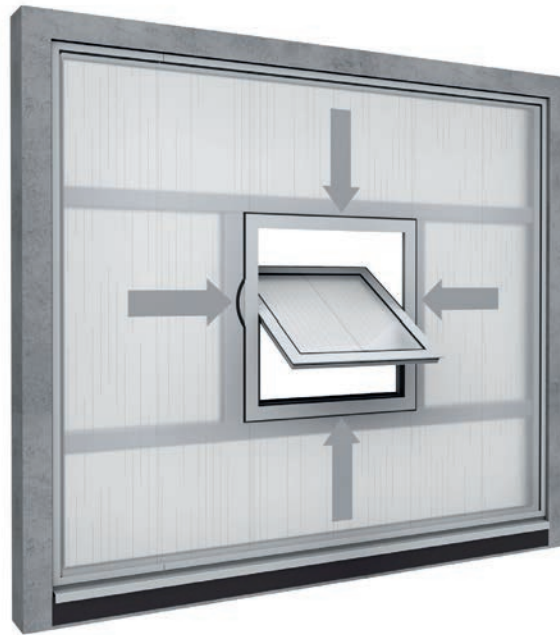
If the window does not match to the standard-width, the laterally adjacent panel has to be cut according to the window size. It is important to ensure that the cut is sufficiently covered by the window frame.





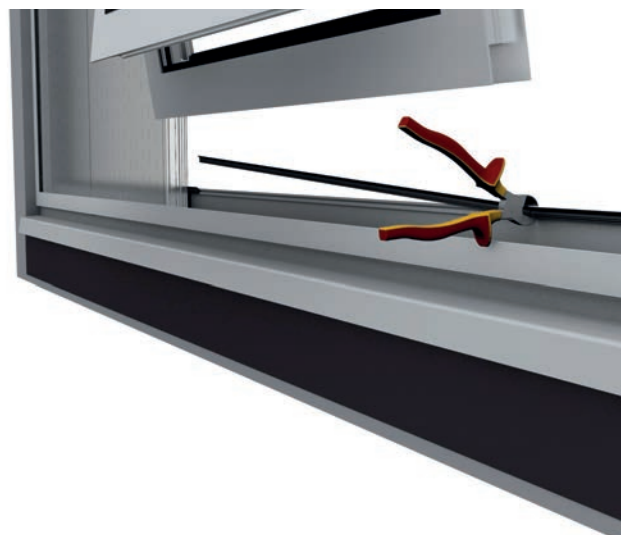
# Installation manual window series 85

The gaskets must be pressed in from outside circumferentially. It could be helpful to use a wooden wedge. It is important to ensure correct positioning of the gasket. To compensate for possible contraction the gasket should be left slightly longer than the frame. Stretching of gasket must be avoided. The corners are to cut miter and lay around the corners, a miter scissors should be used.



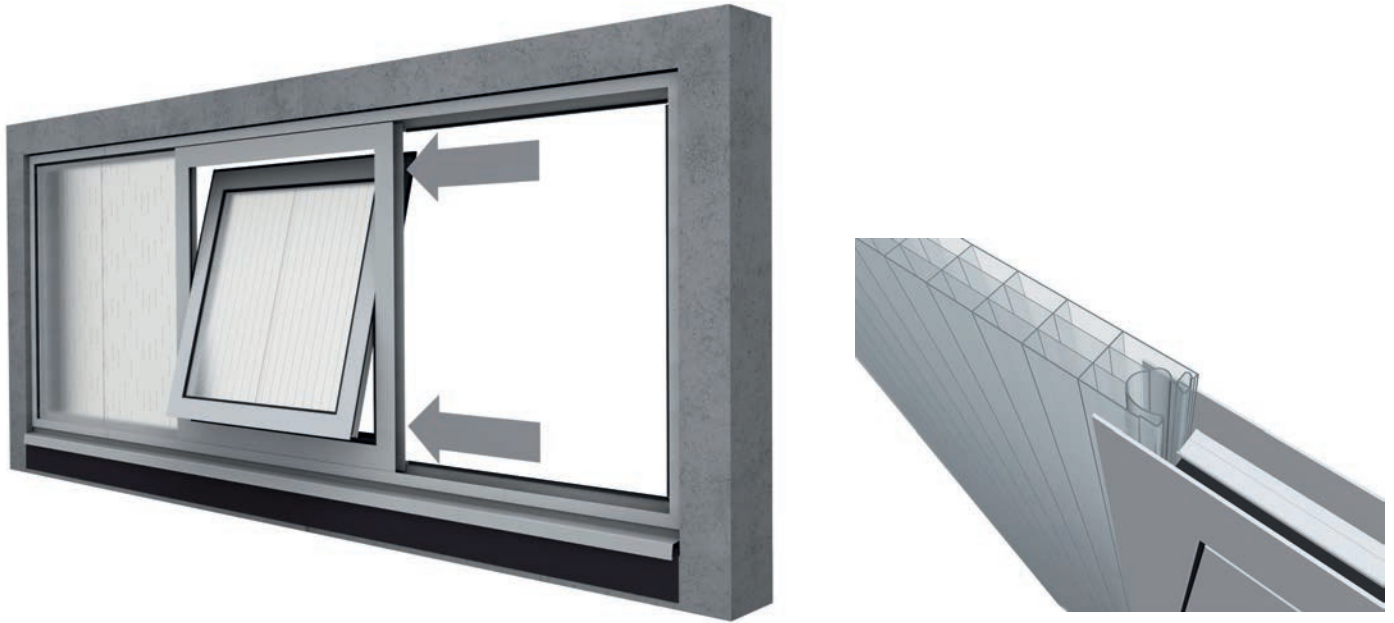
## Installation of window in Rodeca frame profiles

Windows of series 86 can also be set directly into the Rodeca frame profile system. It is important to ensure that the inner seal of the Rodeca frame profile system is removed in these areas.



# Installation manual window series 85

The window has to be pushed on the side of the last mounted panel, so that the panel is placed in the aluminum frame of window.



After alignment the window has to be screwed friction-locked with the substructure. All fasteners and the substructure must be verified by the customer. The fastening plane of the window is the window frame.



# Installation manual

## window series 85

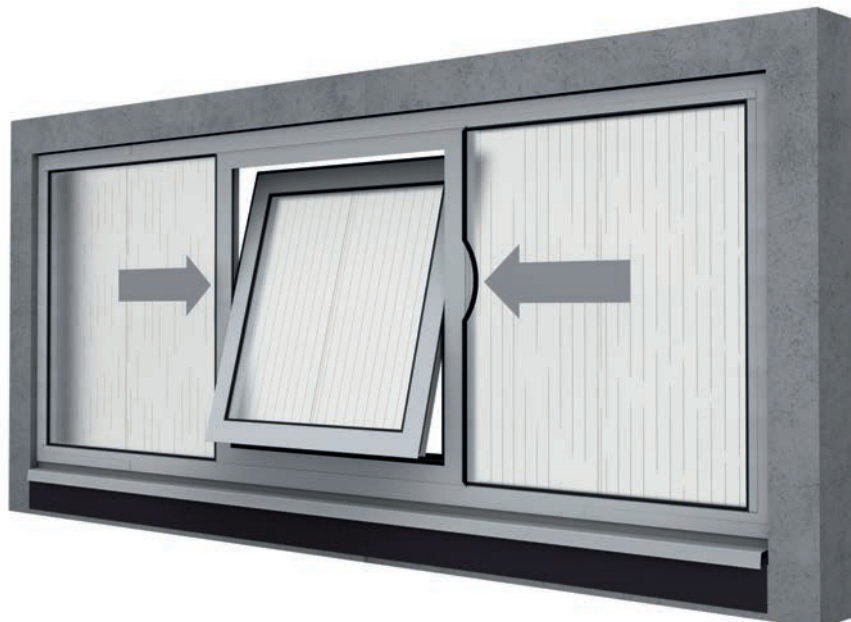
After the adjacent panel is pushed laterally into the window frame, the installation of the light band can be continued.



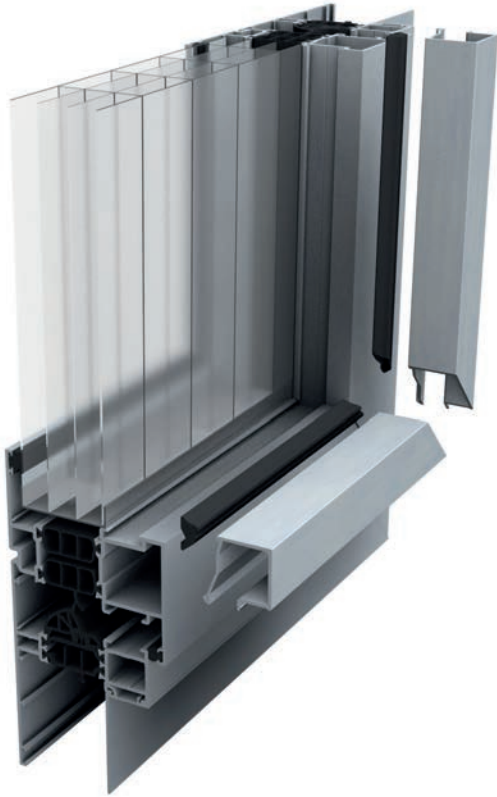
Finally the front plate must be inserted or pushed laterally into the frame profile.



The gaskets must be pressed in from the outside. It is important to ensure correct positioning of the gasket. To compensate for possible contraction the gasket should be left slightly longer than the frame. In areas where the window is mounted in frame profiles the gasket is not to be set.

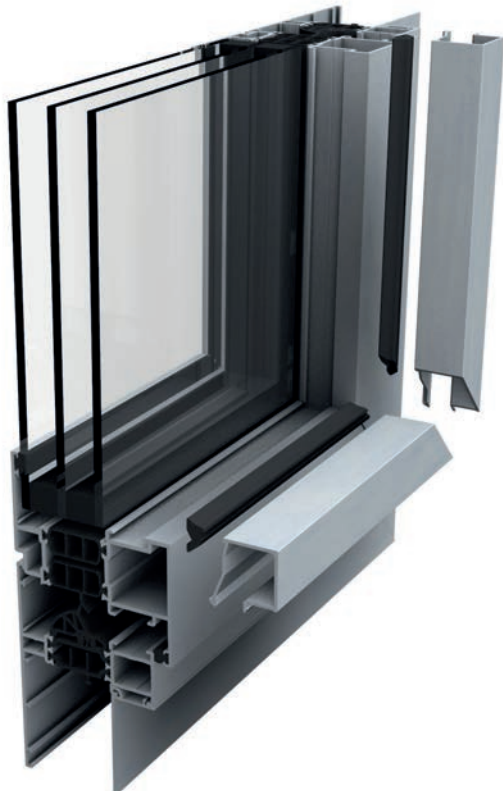


# Installation manual window series 85



## Glazing on site with polycarbonate panels

Series 85 windows can be glazed on site with polycarbonate Translucent Building Elements on a suitable even surface, or on in a window that has already been installed. Glazing strips on the inside can be dismantled for glazing and the panels cut to the correct size can be used for glazing.



## Glazing on site with insulated glass

When series 85 windows are ordered for glazing with insulating glass, we will give you the correct size for your glazing. Glass strips on the inside are to be dismantled and the insulating glass pane is to be properly inserted and blocked. Glazing with insulating glass should be carried out by a specialist company.



# Installation manual

## window series 85

### General information

#### Storage / transport

Window systems are to be protected prior to installation against sun and moisture and must be stored on a flat surface.

Non-observance, can cause damage to the window's bearings.

Mill finish aluminum can form a patina due to environmental influences, this is not a quality defect.

It is to avoid that packaged windows will build condensate in the packaging, otherwise this can cause discoloration of the mill finish or anodized aluminum.

#### Installation instructions for aluminum

Metals such as lead, copper or copper alloys (eg brass) may not be installed together with aluminum. Galvanized steel parts, components made of stainless steel or zinc can be easily processed with aluminum. Aluminum components must not be subject to scratch and shock loads. The installation should be performed only after the completion of the wall, stucco, plaster and stone flooring to avoid action of lime and cement cause of splashes on the surface. Contamination by alkaline substances must be removed immediately to prevent damage to the construction. The fixing of aluminum profiles (eg metal window sills) must always be carried out with stainless steel screws V2A. The attachment between aluminum and building structure should be basically designed to slide.

#### Installation instructions for electric motors

Electronic components are to be installed only by specialists and are not pre-assembled. National regulations on power-operated windows are observed. The manufacturer's instructions are to be considered mandatory. The maximum opening width of the motor is adjusted according to the window size. If required documents are missing, this must be requested about the Rodeca GmbH. The customer is responsible for the use and suitability of the project-related electronic components.

#### Maintenance and care.

All seals must be checked at regular intervals on right seat, possibly to readjust and to clean. All movable fittings are lubricated at least once a year with acid-free grease or oil or resin, and if necessary to retighten the screws. All the various electronic components are waiting of companies at prescribed intervals.

#### Cleaning of polycarbonate glazing

Use water with a small amount neutral detergent. Do not use glass cleaner, abrasive materials or sharp objects. Do not use alkaline detergent or surfactant.

#### Cleaning aluminum windows

To get the look of the aluminum components, cleaning is dependent on the degree of pollution at specified intervals, usually twice a year, required. After assembly of the components must be a thorough cleaning to remove any dirt. Clean rags or sponges should be used. Anodized surfaces should be cleaned using warm water with a chlorine free detergent (eg dishwashing detergent). It should only be done with a cloth or sponge and water. For heavily soiled surfaces, we recommend the use of special anodized surface's cleaner whose effect is achieved by abrasive. Powder coated component's soiling is eliminated in the same manner as described for anodized surfaces. After cleaning it should be rinsed with clean water. Also clean the frame rebate and check the drainage holes in windows - blockages must be removed immediately.

#### Miscellaneous

Subject to technical changes.

This information and our technical advice orally, in writing and by tests based on the present state of our technical knowledge. This information applies only without warranty, and this also applies where proprietary rights of third parties. Our advice does not release you from the currently provided - especially that contained in our safety data and technical information sheets - and to test our products as to their suitability for the intended processes and uses. The application, use and processing of our products and the products manufactured by our technical advice are beyond our control and, therefore, entirely your own responsibility. The sale of our products is subject to our current terms of sale and delivery. Please check before processing, whether our products are suitable for the particular application.

Missing documents must be requested prior to installation about the Rodeca GmbH.