

Rodeca — PC 2250-C

PC 2250-C

Easy to install.

Watertight.

Well thought out.

rodeca[®]
Translucent Building Elements

→ **In Detail.**
Discover our new product line!

The click panel system for modern canopies

PC 2250-C is an innovative panel system featuring an integrated click-connection system. The connection, formed directly within the panel, allows for a secure and precise installation – without the need for additional connecting profiles.

The system significantly simplifies installation and creates a clean, calm appearance for translucent roofing solutions in residential, commercial and industrial applications.



Thoughtfully designed in function and application

Rodeca PC 2250-C allows optimal use of natural daylight, creating bright and comfortable spaces. Thanks to its light-diffusing effect, daylight is distributed evenly, reducing glare and creating a pleasant atmosphere.

At the same time, the system reliably protects against rain and weather exposure – for durable, functional roofing solutions.

PC 2250-C is ideal for translucent canopies and enclosures across a wide range of applications:

- Garages & carports
- Terraces & verandas
- Greenhouses
- Roofs & canopies
- Pergolas made of wood or metal
- and much more



Technical Facts

Usable width	250 mm
Standard length	6000 mm *
Thickness	approx. 1,0 mm
Weight	approx. 1,90 kg
U-value	5,70 W/m ² K
Fire behaviour	B s1,d0

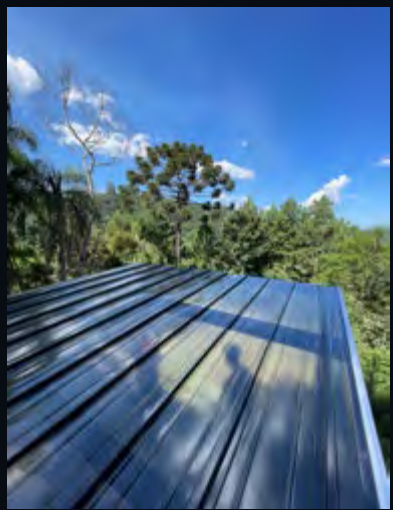
Colours:

Standard	Crystal, Opal
Colour	All colours similar to RAL*

Recommended spans:

0,8 kn/m ²	0,70 m
1,0 kn/m ²	0,60 m
1,2 kn /m ²	0,50 m

* available on request





www.rodca.de/en

Rodeca GmbH
Freiherr-vom-Stein-Str. 165
45473 Mülheim an der Ruhr

Tel.: +49 (0)208 / 76502-0
Fax: +49 (0)208 / 76502-11
E-mail: info@rodca.de