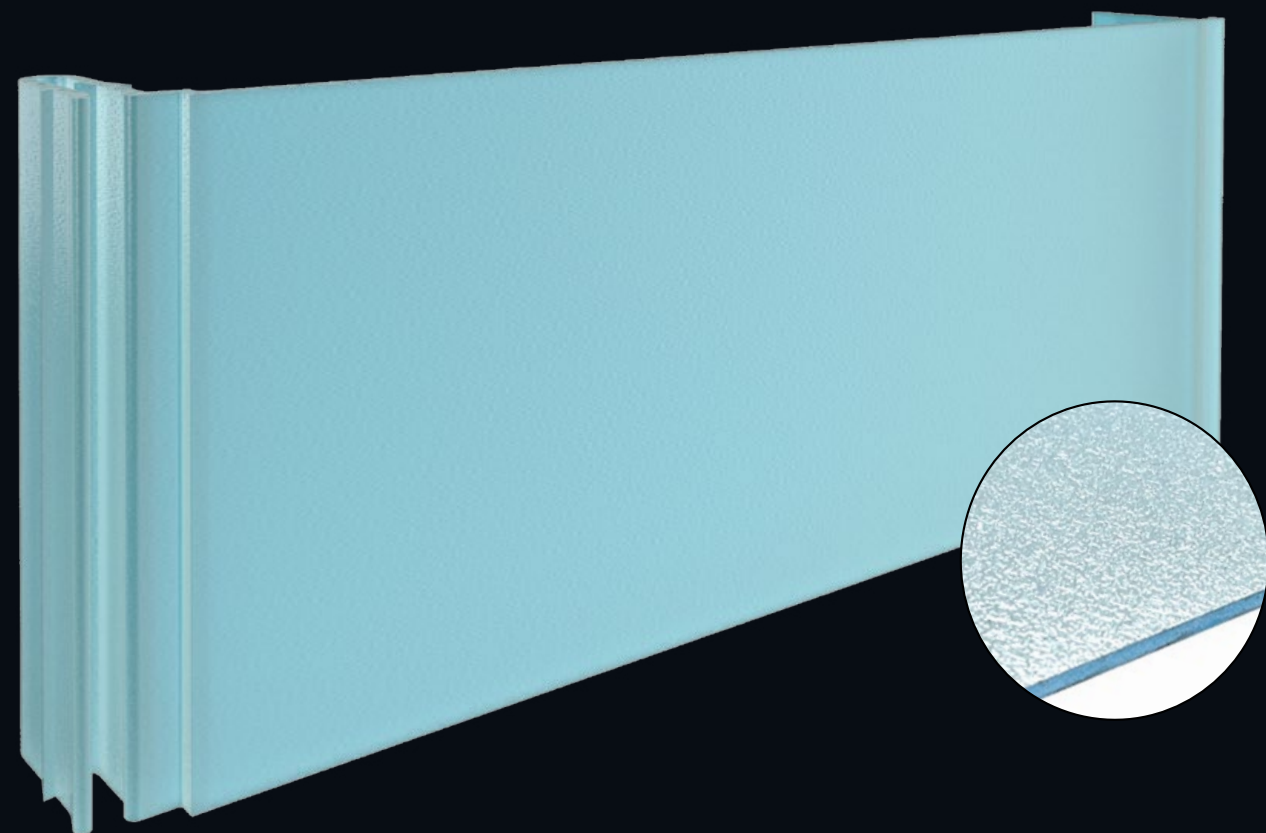


New benchmarks for polycarbonate facades

Flexibility and Design freedom

Horizontal, diagonal or vertical, transparent or opaque, brilliant colours to discreet and muted grey colours, the Rodeca Solid Wall Panel offers a new perspective of design freedom for your project.





The Rodeca SWP system at a glance



Easy assembly

with a total weight of 3.8 kg/m² and a building width of 250 mm, mounting with standard tools, easy clip connection



Design freedom

colouring as desired, can be mounted in multiple directions



Sustainable

the SWP system contains only 2 materials; aluminium and polycarbonate, both with high recycling values



Weather proof

high quality UV-protection, low maintenance, humidity-resistant



Fire safe

B-s1, d0 according to EN 13501, no burning drip



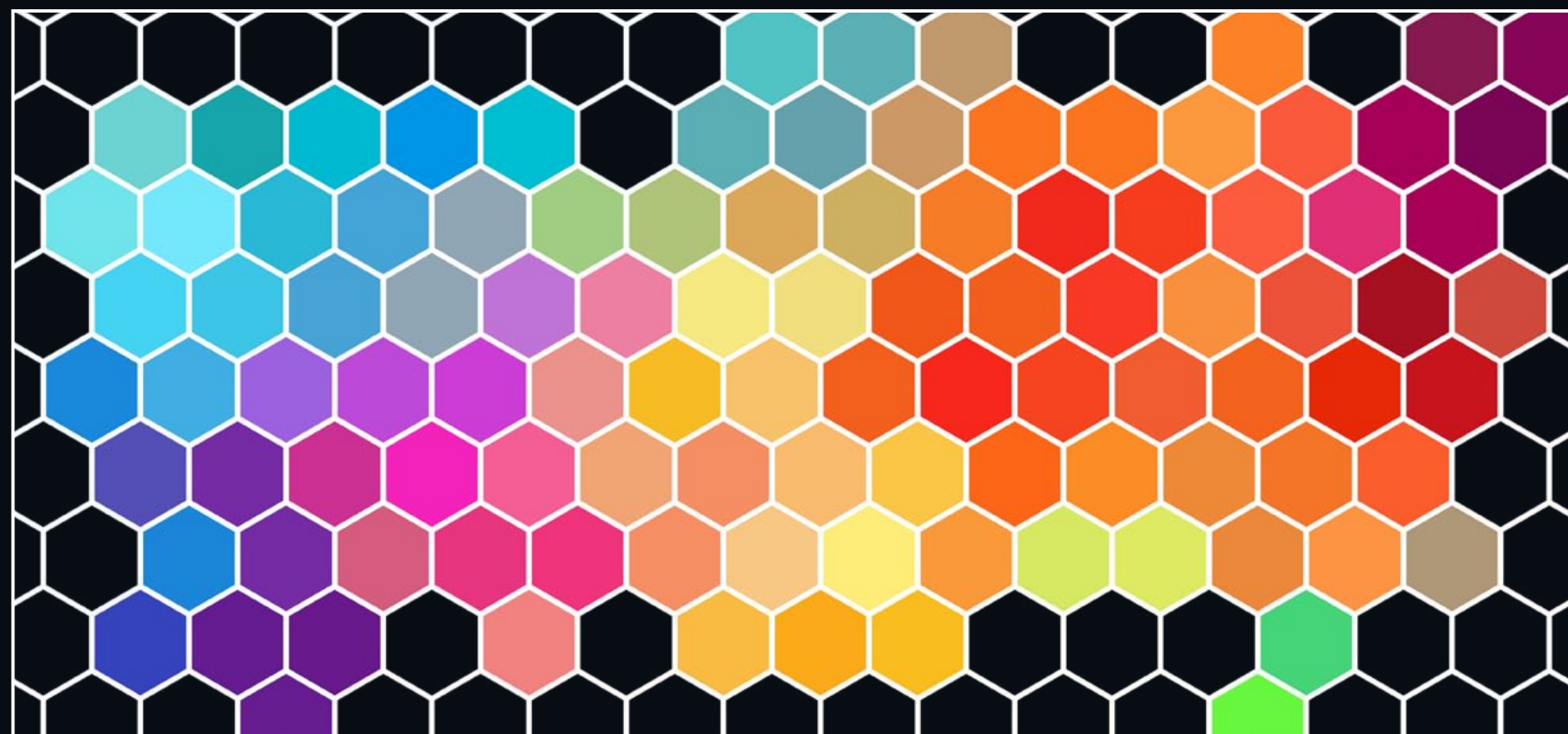
Light transmissive

translucent, transparent or opaque ideal for back-lighting

Distinctive colours for unique objects

Rodeca's innovative approach takes the forefront in producing items that blend the aesthetic, structural, and environmental concerns of our modern society. With Rodeca's Solid Wall Panel your creativity knows no bounds, serving as a captivating focal point for your construction project.

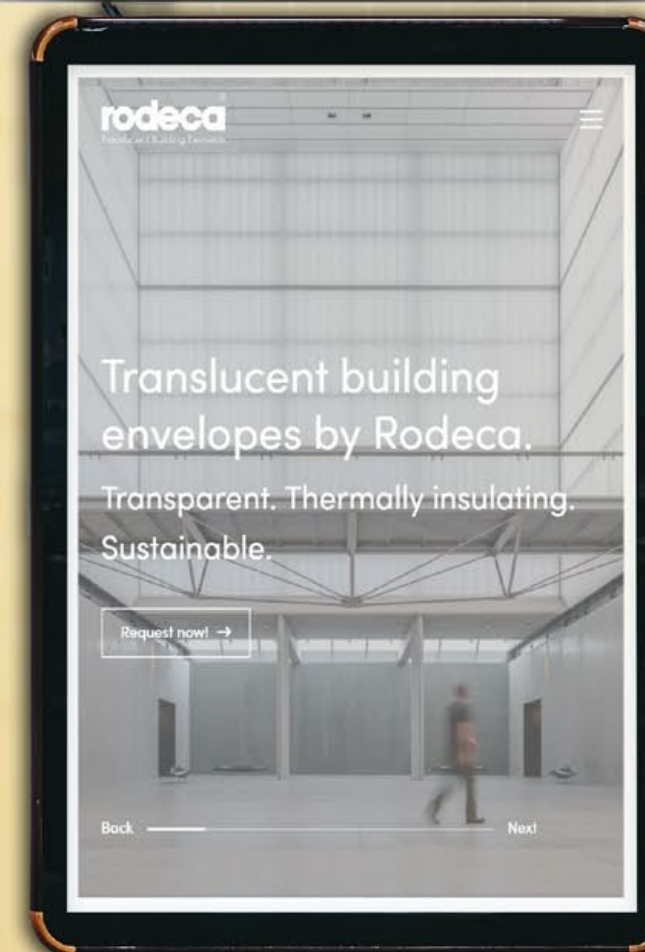
Transparent, opaque or satin-finished colours, trend colour or individual colour request. Rodeca offers an almost unlimited range of colours. Please contact us!



Light and transparency

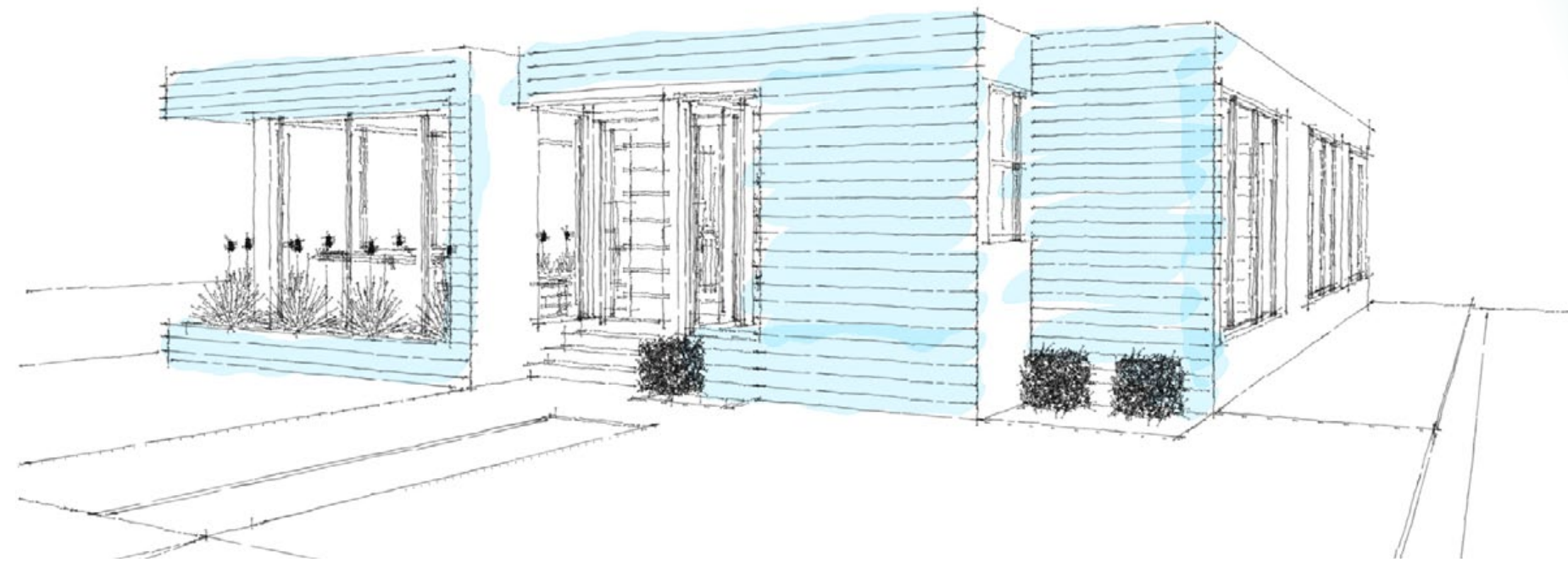
SWP is the optimal choice for backlit indoor and outdoor surfaces. From homogeneous light distribution to individual points of light, any desired lighting effect can be achieved.

SWP – the product for unique projects!



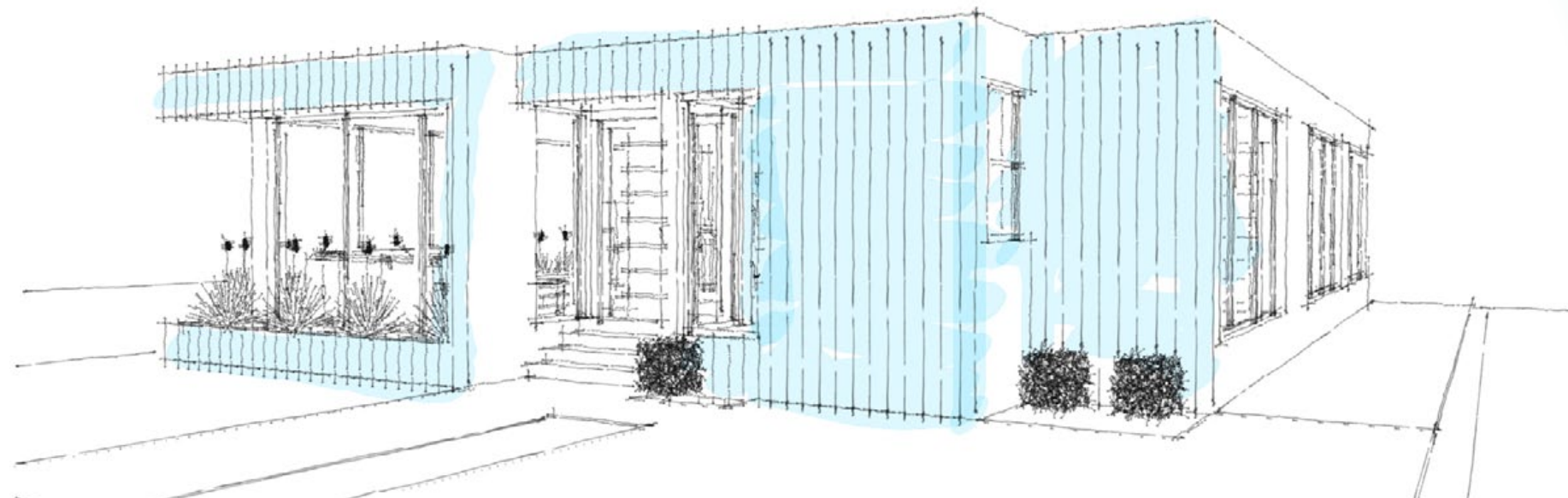
In Detail. Horizontal Placing

Installed horizontally, Rodeca Solid Wall Panels can add the optical illusion of width to your building. The robust polycarbonate panels with frosted surfaces can be attached with aluminum retaining clips to common substructures or helping hands systems allowing for quick and cost effective rain screen mounting.



In Detail. Vertical placing

The innovative SWP system with a handy width of only 250 mm can be attached to almost all common substructures to create an aesthetic rainscreen. Installed vertically, Rodeca Solid Wall Panels can add a visual elongation to your building. For especially dynamic and exciting facade effects, SWP system can also be mounted diagonally.



The interplay of light and colour

Our new Rodeca SWP system has been specially developed to make high-quality facade cladding possible without great effort. Here our simple click system, the few accessories and the low weight of the panels give a newfound liberty in creating a functional, aesthetic and economic weather screen. Thanks to their high-quality UV protection, Rodeca polycarbonate panels are durable and remain vibrant. The complete system can easily and cost effectively be recycled, thus contributing an important part to the environmental protection.

www.rodeca.de/en

SWP

New benchmarks for polycarbonate facades

Properties

Width	250 mm
Thickness	2.7 mm
Weight	approx. 3.8 kg/m ²
Length	up to 6 m
Fire classification	B-s1,d0 (EN 13501)